

Synthetic Turf Playfields at Jericho and Memorial South Parks

- A. THAT the Board approve the installation of a synthetic turf playfield at Jericho Park on the existing grass playfield adjacent to Discovery Street (the 'West Field'), as described in this report.
- B. THAT the Board approve the installation of a synthetic turf playfield at Memorial South Park on the existing grass playfield/pitch in the central oval, combined with an upgrade of the existing running track, as described in this report.
- C. THAT the Board direct staff to update and revise the 2002 Playing Field Renewal Plan to guide playfield capital investments, playfield maintenance programs and playfield allocations to user groups for the next ten years.

Synthetic Turf Playfields at Jericho and Memorial South Parks

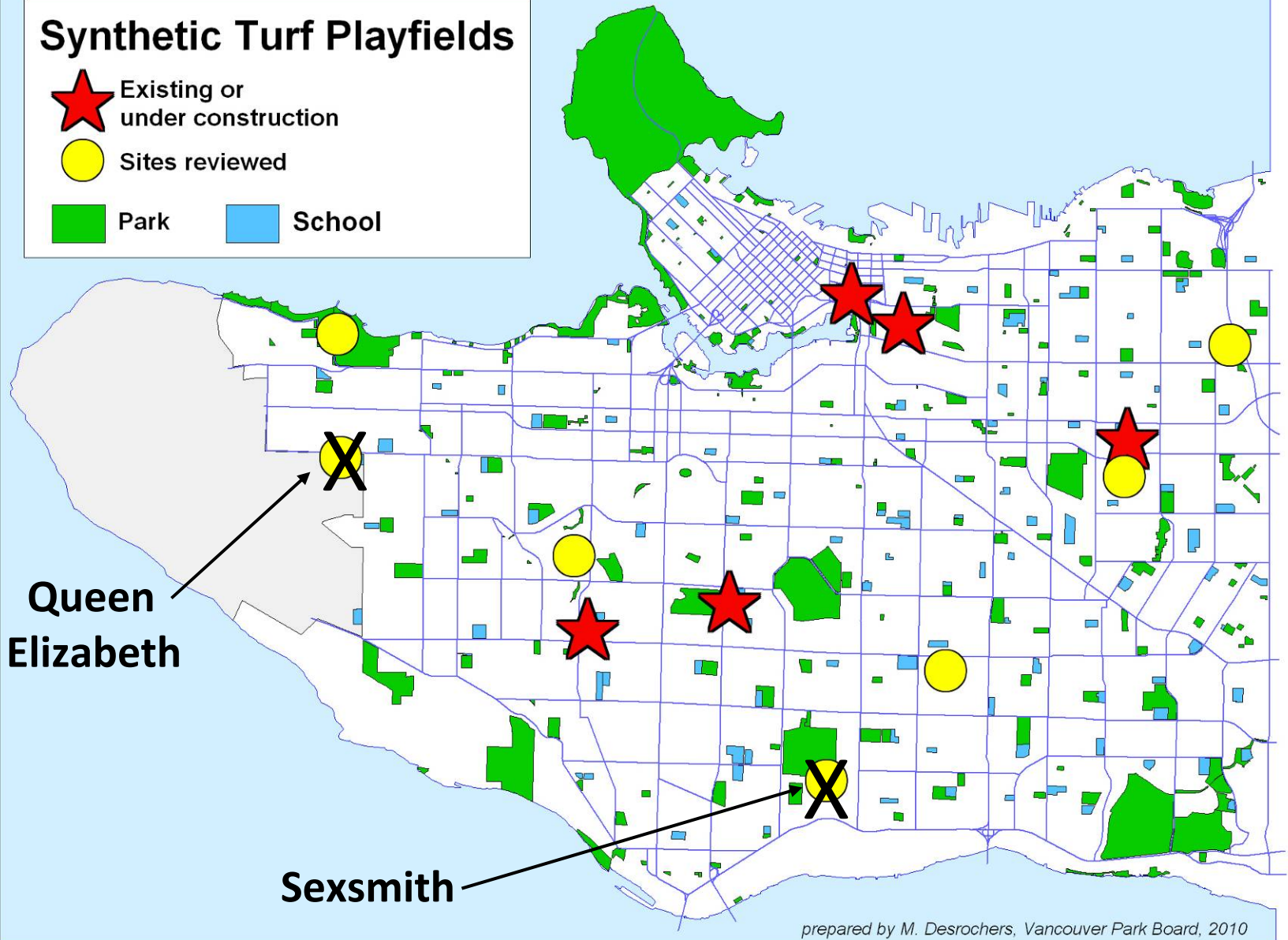
Process:

- \$5.5 M in Capital Plan
- Process started in April 2009
- Worked closely with Field Sports Federation
- Open houses in Fall 2009
- Staff recommendation in Jan. 2010



Synthetic Turf Playfields

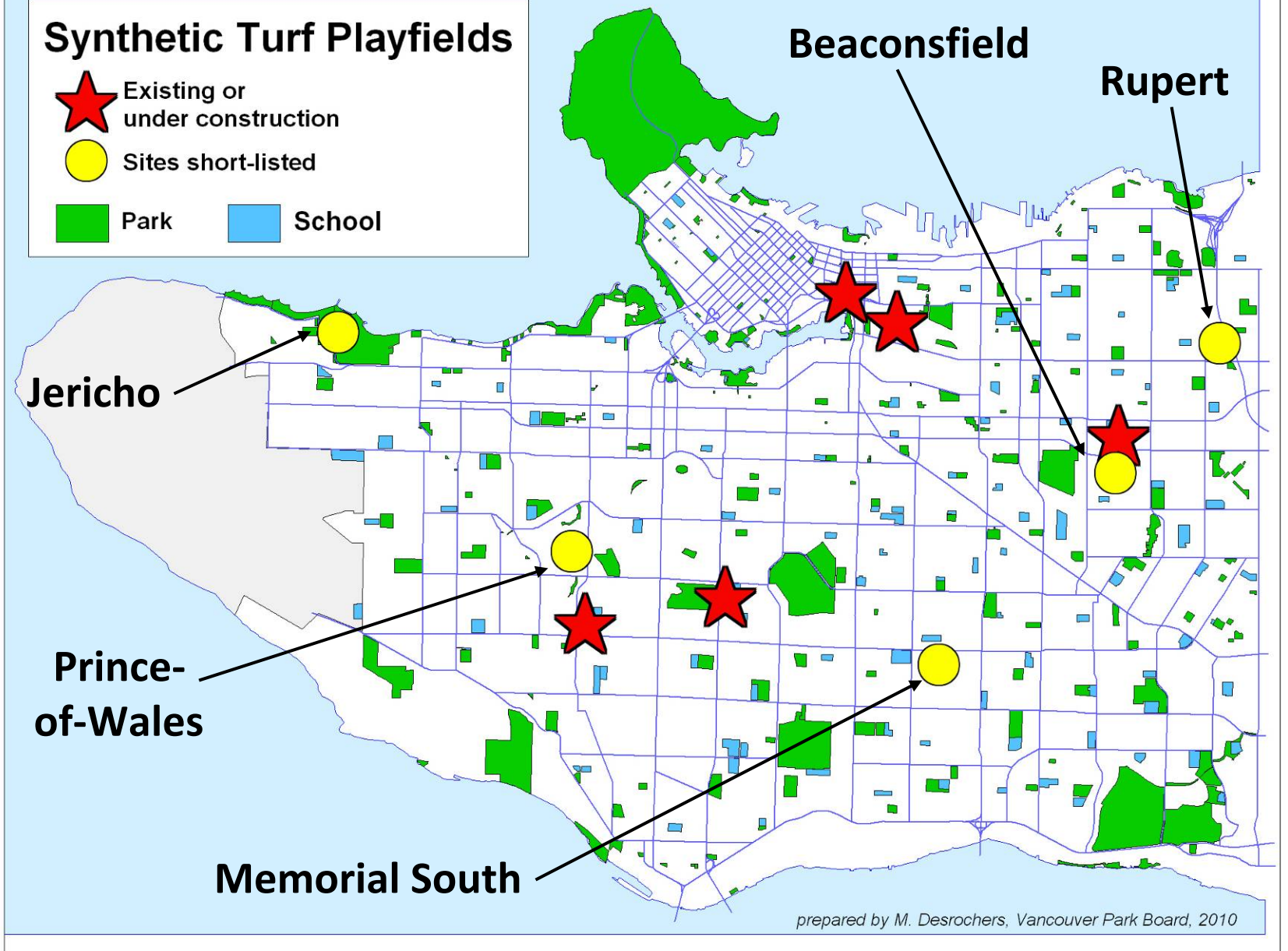
- ★ Existing or under construction
- Sites reviewed
- Park
- School





prepared by M. Desrochers, Vancouver Park Board, 2010

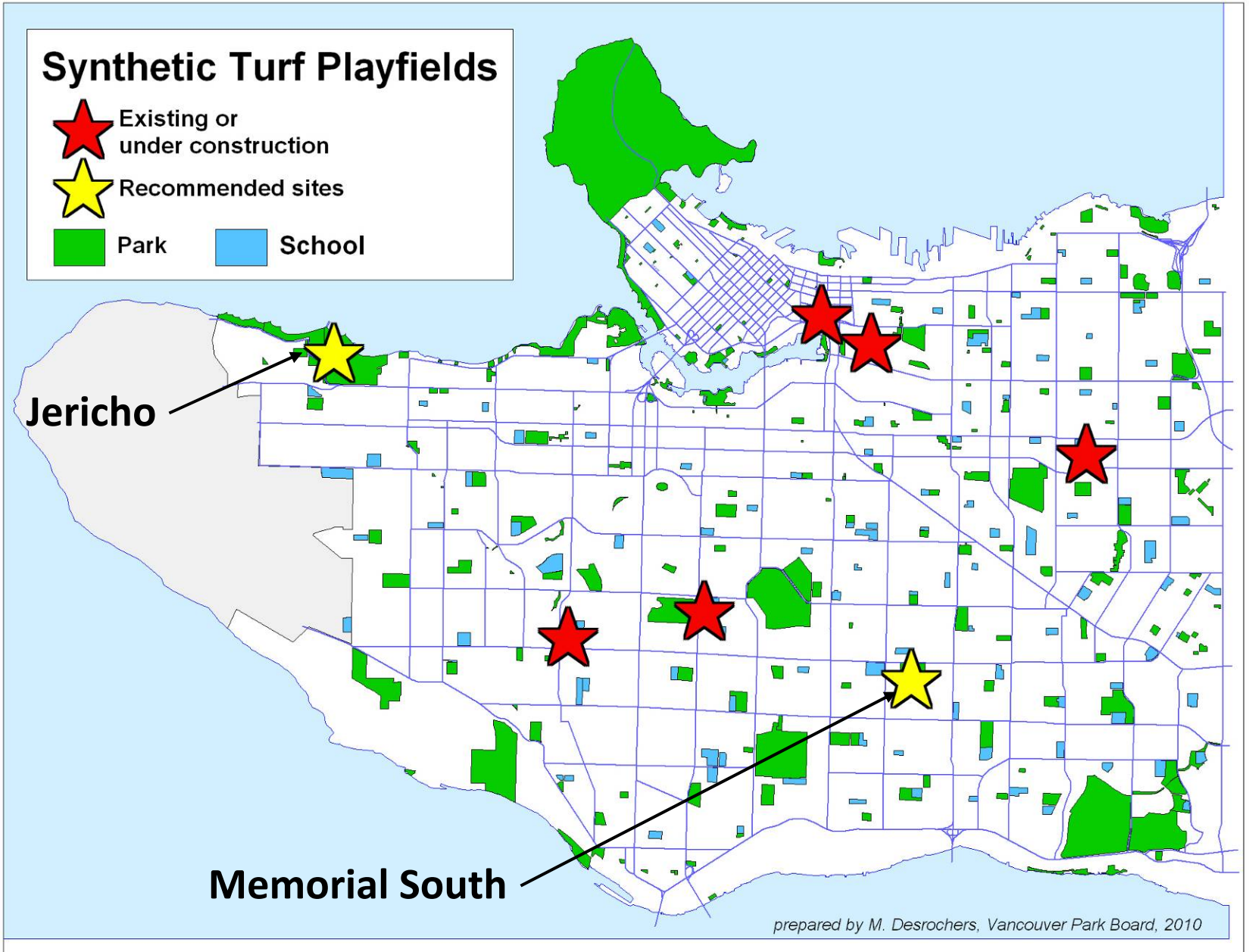
Synthetic Turf Playfields

- ★ Existing or under construction
- Sites short-listed
- Park
- School



Synthetic Turf Playfields

-  Existing or under construction
-  Recommended sites
-  Park
-  School



prepared by M. Desrochers, Vancouver Park Board, 2010

Synthetic Turf Playfields at Jericho and Memorial South Parks

Topics:

- The long-term view
- Federal agreement
- Project timelines
- Jericho Park
- Memorial South Park
- Next steps

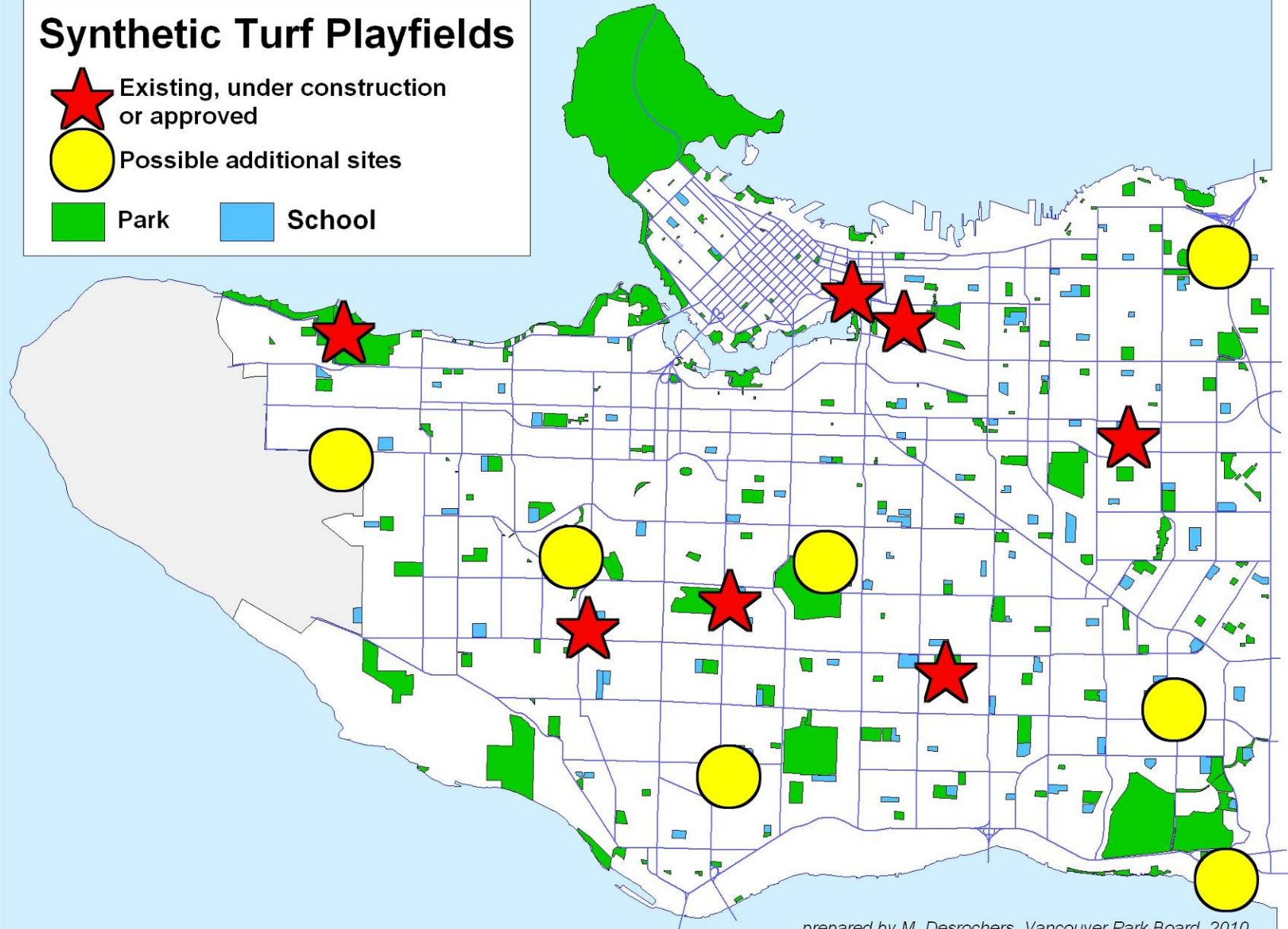


Synthetic Turf Playfields

★ Existing, under construction or approved

● Possible additional sites

■ Park ■ School



prepared by M. Desrochers, Vancouver Park Board, 2010

Synthetic Turf Playfields at Jericho and Memorial South Parks

Federal Agreement:

- December 2009
- Outcomes: two fields and running track
- Federal contribution: 17%
Parks contribution: 83%
- Deadline: March 2011



Synthetic Turf Playfields at Jericho and Memorial South Parks

Project timeline for park site:

- Pre-construction: 5 months (Feb. through June 2010):
 - Select consultant: Feb.
 - Detailed construction drawings: March-May
 - Development Permit: April-May
 - Tender: May-June

- Construction: 9 months (July 2010 through March 2011):
 - Site preparation: July
 - Sub-base, drainage, concrete: Aug.-Sept.
 - Turf installation: Oct.-Nov.
 - Lights, electrical, other: Dec.-March

Synthetic Turf Playfields at Jericho and Memorial South Parks

Extra steps for school site:

- Pre-construction:
 - School Board approval: 1 month (minimum)
 - License Agreement: 2 months (minimum)
 - School Board review of construction drawings: 1 month

Risks:

- School Board may not approve site
- Start of construction delayed
- More construction during rainy season
- Project completed after March 2011

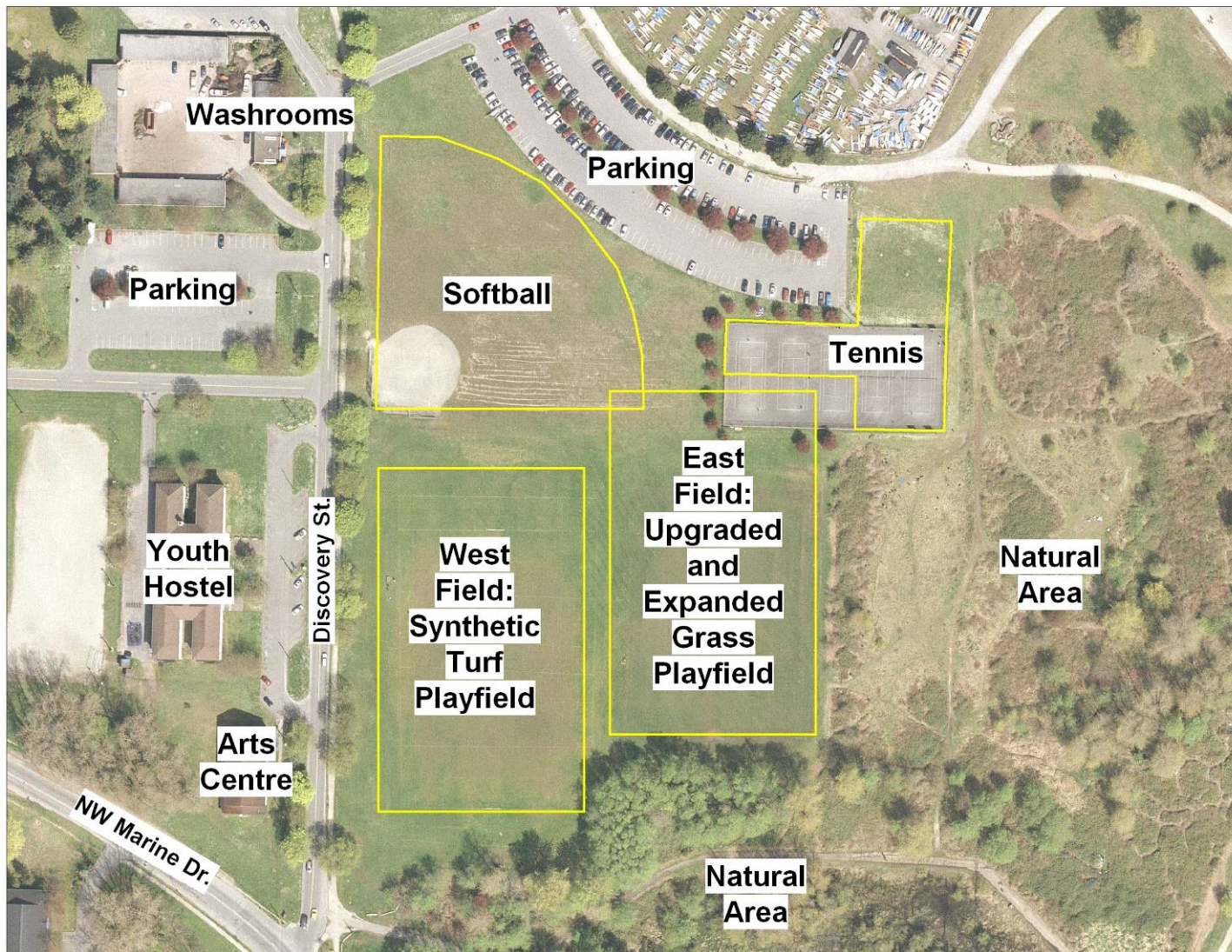
Synthetic Turf Playfields at Jericho and Memorial South Parks



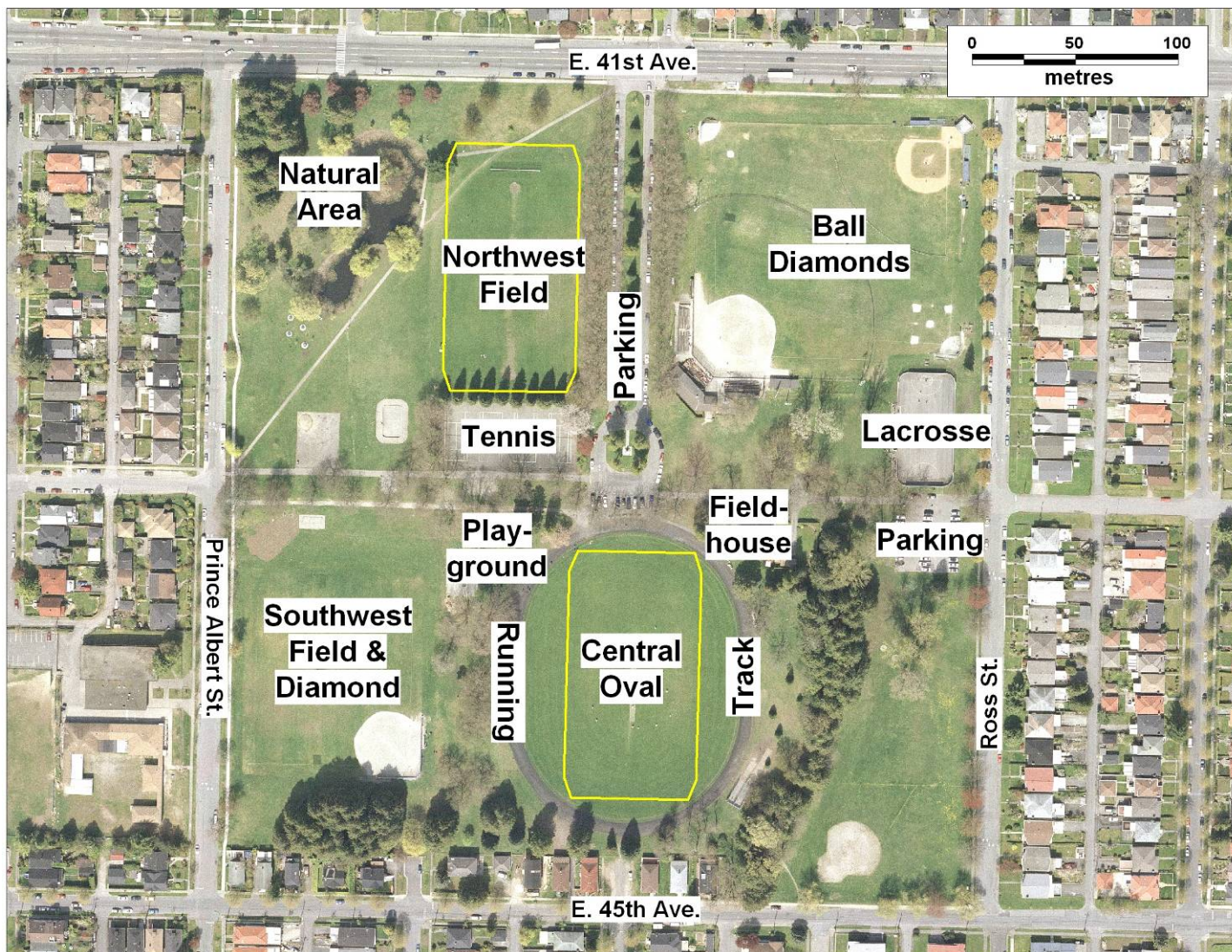
Synthetic Turf Playfields at Jericho and Memorial South Parks



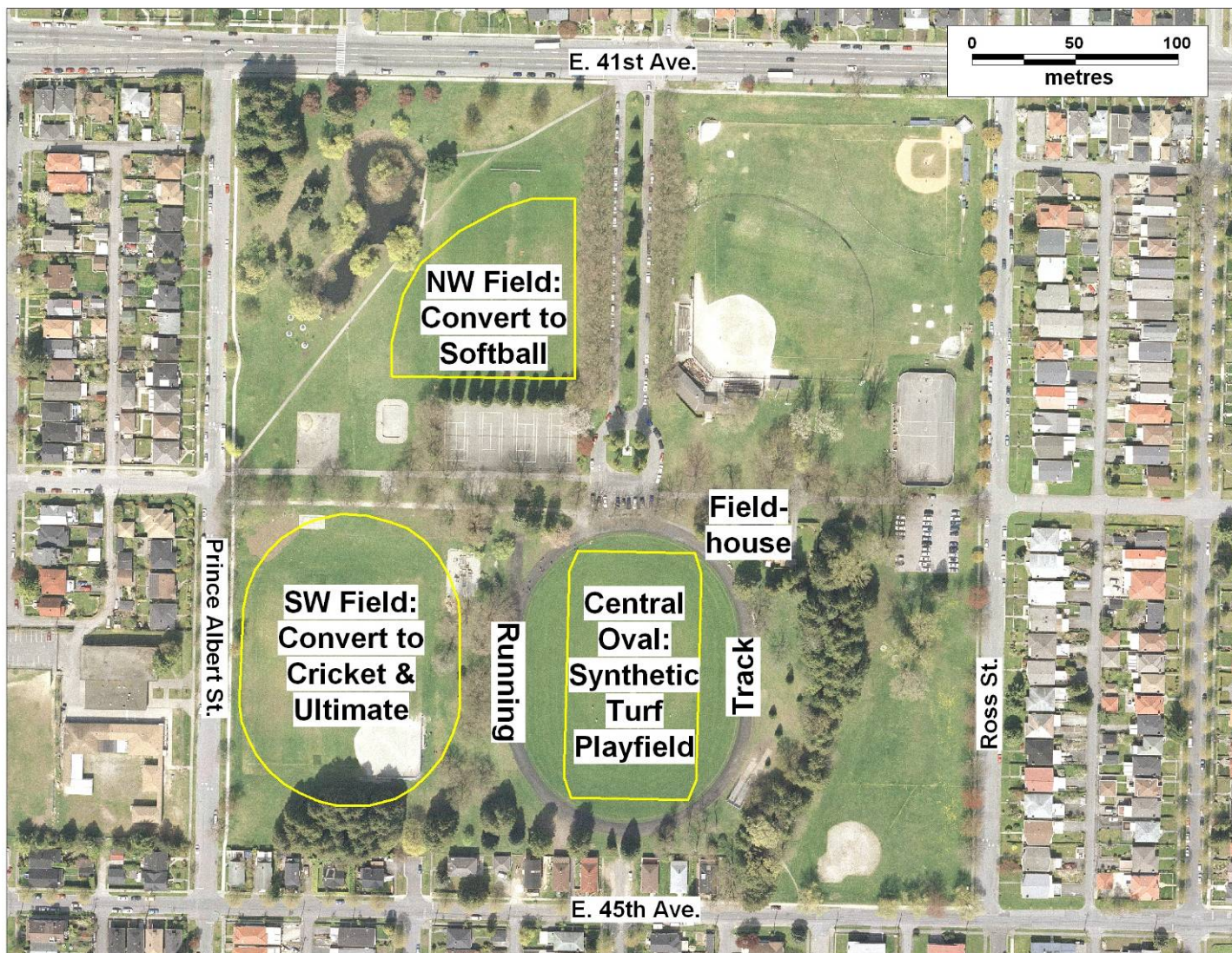
Synthetic Turf Playfields at Jericho and Memorial South Parks



Synthetic Turf Playfields at Jericho and Memorial South Parks



Synthetic Turf Playfields at Jericho and Memorial South Parks



Synthetic Turf Playfields at Jericho and Memorial South Parks

Next Steps:

- Hire consultant
- Determine surface type
- Develop phasing plan
- Apply for City permits
- Award construction contract
- Start construction

